

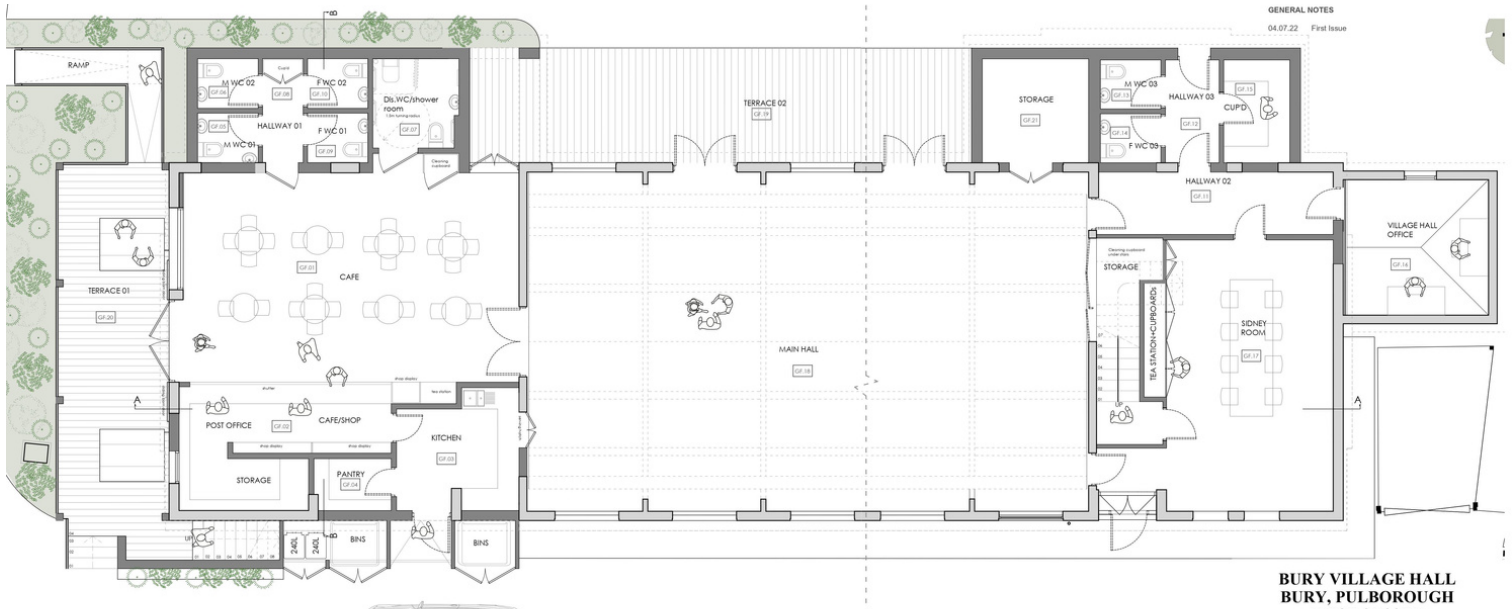
BACK OUR NEW-LOOK VILLAGE HALL – WE NEED YOUR SUPPORT



Bury Village Hall was originally built in the 1970s and over that time has become a much-loved venue in our Parish. However, no major updates have been carried out since that time and now the roof needs replacing and the oil-fired boiler is over 15 years old, so will also need replacing.

These necessary repairs have given your Parish Council the opportunity to take a fresh look at the venue and we propose a fuller refresh. Our changes would give Bury a much-needed social hub, somewhere for people to drop in for coffee, stage smaller group meetings and help beat social isolation within our community. And they would see our village hall reroofed, well insulated, and with ground source and solar energy, making it a dependable resilience centre at times of need.

OUR VISION OF A BURY VILLAGE HALL FIT FOR THE 21ST CENTURY



Above is the proposed new ground-floor of the village hall in its entirety. On the left, you can see a new outside terrace area alongside The Street, which is the location of the new main entrance. Stepping through, you enter the exciting new 'social hub', an attractive meeting place at the heart of our community. Through the doors in the main hall, little has changed. The dimensions of the hall have been retained. New french windows open onto a terrace area here, which improves the village hall's interface to the Bury Green children's playground. Two small extensions provide new, improved toilet facilities both at the front of the hall and towards the rear.



NEW CAFE AND SOCIAL HUB

The new social hub space (left, in bigger detail) is a flexible space where villagers can meet for coffee or perhaps attend smaller group meetings such as book clubs or bridge clubs. During larger village hall events, such as the Christmas Lunch, the space functions as a foyer to the main hall. This area is served by a large counter, incorporating the Post Office, with new improved kitchen and storage behind. To the front of the village hall is a new outdoor terraced area, ideal for enjoying coffee with friends and neighbours on fine days.

If you like the plans for a new-look Bury village hall, we need your backing now! Turn to the back page to see how you can add your support today....

A WARM NEW WELCOME...

Our reinvented village hall transforms the building's street persona, right, making it an attractive village asset where a welcome awaits...



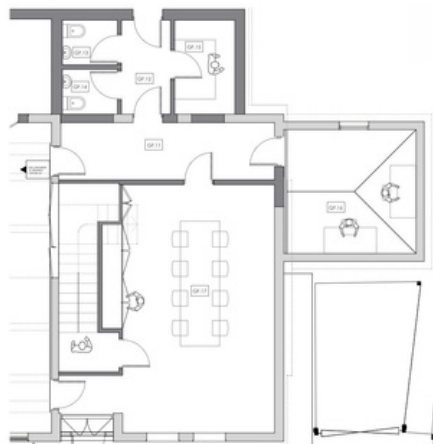
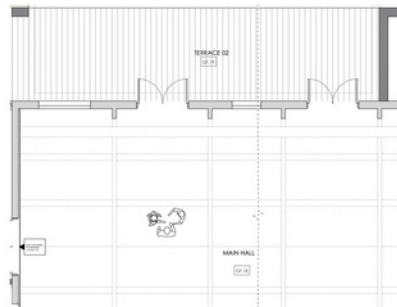
NEW INCOME STREAMS ON FIRST FLOOR

The plan (left) is for the first-floor area to the front of the village hall. By removing the interior staircase and replacing it with exterior steps, two large office areas served by a kitchenette and toilets would present income opportunities for the parish, either as co-working space for locals who would like to work near home, or as entire rental office accommodation.

Follow us on Facebook at:
www.facebook.com/buryparishcouncil

NEW TERRACE AREA LINKING BURY GREEN

The additional terrace area on the North side of the village hall (right) is accessed both via french doors from the main hall and from the new social hub area.



TOILETS ACCESSIBLE FROM BURY GREEN

From this detail (left), you can see that the new toilets to the rear of the hall would be accessible from outside, providing much needed facilities to those visiting Bury Green.

To see all the plans and elevations by Victoria Holland Architecture, go to buryparishcouncil.org.uk and select the News section. There, search for 'village hall'. Open the item dated August 15, 2022, for a link.

WHY WE THINK IT'S A GREAT IDEA...

- ✓ A social hub at the heart of our village.
- ✓ Tackles social isolation.
- ✓ New social space will function as a coffee shop.
- ✓ A smaller, more intimate venue.
- ✓ Makes the village hall fit for the 21st Century, 50 years after it was built.
- ✓ A more attractive and welcoming village hall.
- ✓ Better kitchen facilities.
- ✓ A large counter area for dispensing refreshments.
- ✓ Present Post Office function behind counter.
- ✓ New extensive toilets, including exterior access.
- ✓ Strengthens links with Bury Green.
- ✓ A new roof to replace current deteriorating tiles.
- ✓ Alternative heating system will end burning of fossil fuels.
- ✓ Walls, roof and windows insulated for maximum energy efficiency.
- ✓ Village hall will also function as a Resilience Centre in emergency, eg flooding, power cuts, snow.
- ✓ Positive social engagement for volunteers manning coffee shop, plus potential local employment.
- ✓ A base for our Sussex Police Local Community Officer.
- ✓ First floor provides leasable office space or co-working spaces, a new income stream for the village.
- ✓ New stairs by Sidney Room provide access to first-floor storage area.

WHAT WILL IT COST AND HOW CAN WE AFFORD IT?



Based on our architects' drawings and quotations we have received, we estimate the cost of the project at today's prices to be in the region of £550,000. However, the longer it takes to begin building work, the more these costs are likely to increase, especially in the current economic climate.

We have studied similar projects at Fittleworth, Farnham, Lodswoth and Bolney, where communities have achieved challenging targets through focus, determination and community spirit. We believe Bury can do the same.

Bury Parish Council is optimistic of receiving a significant contribution to these costs thanks to income earned by Squires Cottages, which is specifically pledged to support village hall and Bury Green matters. That would nevertheless need us needing to raise at least £450,000 at today's prices.

Clearly the economic climate has changed since we began to explore the feasibility of a new improved village hall. However, we still believe the balancing target can be reached by exploring various possible sources of funding.

The project will not begin until we have secured all necessary funding. However, to be in a strong position to apply for some of these sources of funding, it is vital that Bury can demonstrate we have strong community backing for the plans. Without that clear backing, our applications would fail. That's why we need your support today!

If, like us, you believe these proposals represent a huge step forward for our community, PLEASE indicate your support by filling the slip below and returning it to the dedicated box at Cokes Farm, West Burton, Bury Village Hall (outside letterbox) or The Squire and Horse. Alternatively, you can indicate your support online by visiting <https://buryparishcouncil.org.uk/village-hall-refurbishment-plans-have-your-say/>

This is VITAL. Without a high level of declared community support, the funds cannot be raised. Add your support today!

POTENTIAL SOURCES OF FUNDING

Grant Funding

The National Lottery and many other sources make significant grants towards community projects such as ours.

Local fund raising

Perhaps not the source of the majority of the funding we will need, but an important contribution, not least as an expression of community support and involvement.

Public Works Loan

Available to local authorities at preferential rates, repayable over as many as 30 years.

Community Infrastructure Levy contributions

Applications can be made to our local planning authority.

PUBLIC MEETING
THURSDAY
8TH DECEMBER
6.30PM, BURY
VILLAGE HALL



NAME:

ADDRESS:

I support Bury Parish Council's proposals for the refurbishment of Bury Village Hall

(Please tick as appropriate)

Yes

No

SIGNED: DATE: