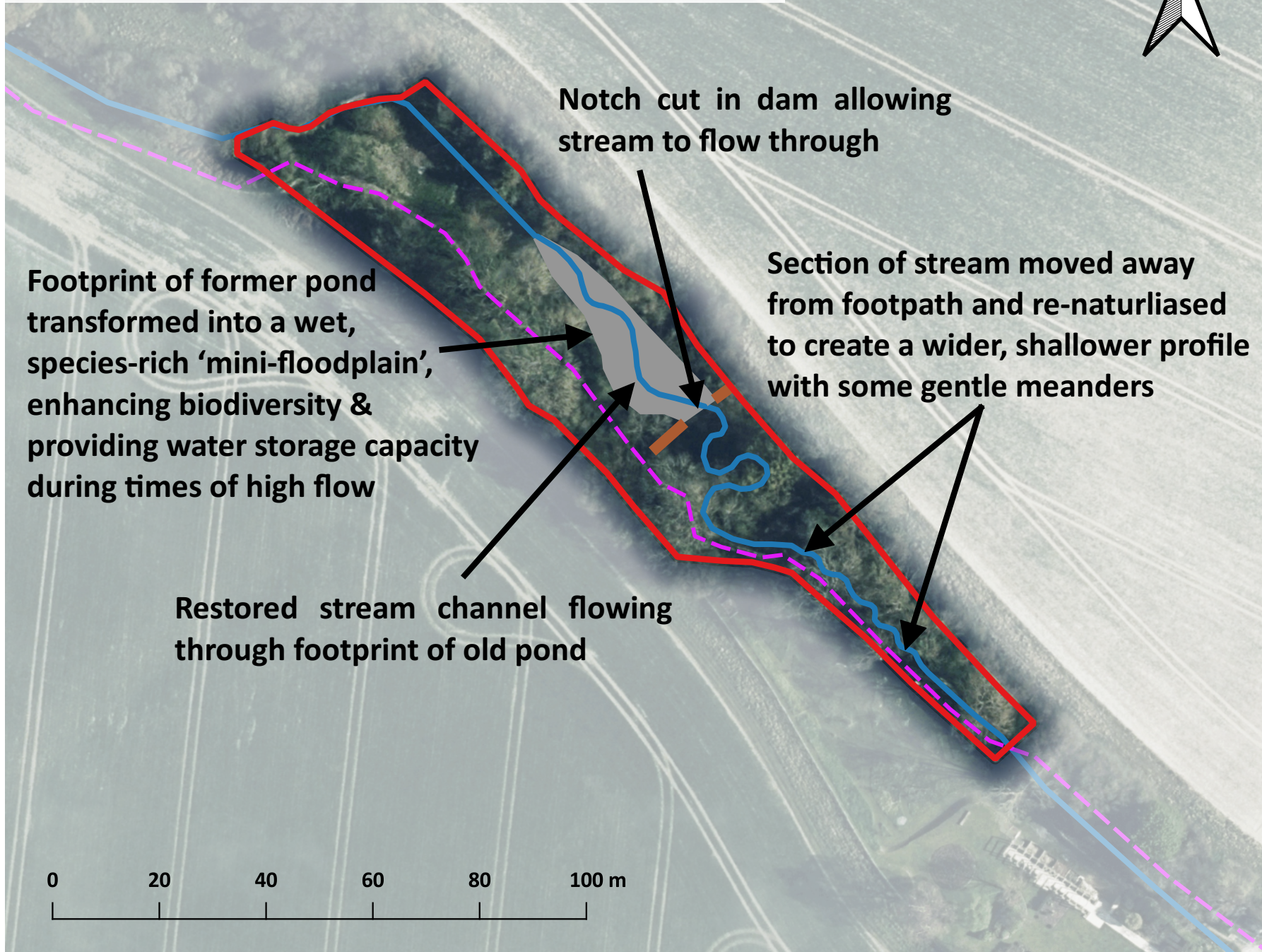


Pill Common site plan

after stream restoration & access improvements

SOUTH DOWNS
NATIONAL PARK



Notch cut in dam allowing stream to flow through

Footprint of former pond transformed into a wet, species-rich 'mini-floodplain', enhancing biodiversity & providing water storage capacity during times of high flow

Section of stream moved away from footpath and re-naturalised to create a wider, shallower profile with some gentle meanders

Restored stream channel flowing through footprint of old pond

Key

- Site boundary
- Pill Pond dam
- West Burton stream
- PROW
- Drained footprint of Pill Pond

Scale 1:1000

